



GnRH I Polyclonal Antibody

Catalog No	YP-Ab-15920
Isotype	IgG
Reactivity	Human;Rat;Mouse;
Applications	IHC;IF;ELISA
Gene Name	GNRH1
Protein Name	Progonadoliberin-1
Immunogen	The antiserum was produced against synthesized peptide derived from human GnRH I. AA range:43-92
Specificity	GnRH I Polyclonal Antibody detects endogenous levels of GnRH I protein.
Formulation	Liquid in PBS containing 50% glycerol, 0.5% BSA and 0.02% sodium azide.
Source	Polyclonal, Rabbit,IgG
Purification	The antibody was affinity-purified from rabbit antiserum by affinity-chromatography using epitope-specific immunogen.
Dilution	WB 1:500-2000 ,IHC: 1/100 - 1/300. ELISA: 1/10000.. IF 1:50-200
Concentration	1 mg/ml
Purity	≥90%
Storage Stability	-20°C/1 year
Synonyms	GNRH1; GNRH; GRH; LHRH; Progonadoliberin-1; Progonadoliberin I
Observed Band	
Cell Pathway	Secreted.
Tissue Specificity	Brain,
Function	function:Stimulates the secretion of gonadotropins; it stimulates the secretion of both luteinizing and follicle-stimulating hormones.,online information:Gonadotropin-releasing hormone entry,pharmaceutical:Available under the names Factrel (Ayerst Labs), Lutrepulse or Lutrelf (Ferring Pharmaceuticals) and Relisorm (Serono). Used in evaluating hypothalamic-pituitary gonadotropic function.,similarity:Belongs to the GnRH family.,
Background	gonadotropin releasing hormone 1(GNRH1) Homo sapiens This gene encodes a preproprotein that is proteolytically processed to generate a peptide that is a member of the gonadotropin-releasing hormone (GnRH) family of peptides. Alternative splicing results in multiple transcript variants, at least one of which is secreted and then cleaved to generate gonadoliberin-1 and GnRH-associated peptide 1. Gonadoliberin-1 stimulates the release of luteinizing and follicle stimulating hormones, which are important for reproduction. Mutations



in this gene are associated with hypogonadotropic hypogonadism. [provided by RefSeq, Nov 2015],

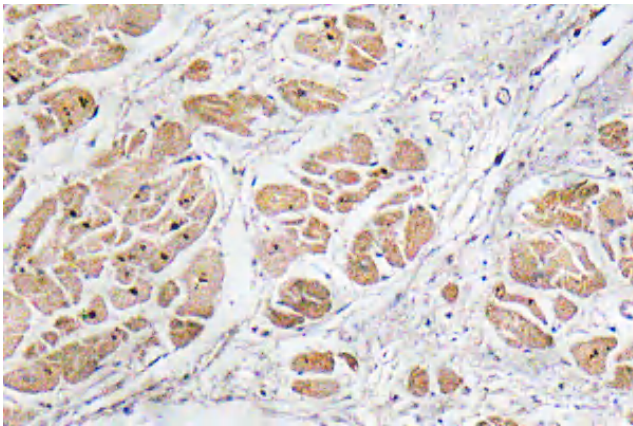
matters needing attention

Avoid repeated freezing and thawing!

Usage suggestions

This product can be used in immunological reaction related experiments. For more information, please consult technical personnel.

Products Images



Immunohistochemistry analysis of GnRH I antibody in paraffin-embedded human heart tissue.